



MARY LOU WEIDMAN ----- Spokane Valley, WA

Mary Lou Weidman began her quilting life creating yo yo 's as a child at her Grandmother's knee and as an adult progressed to doing Story quilts with a folk art style that took the fancy of Museums and Galleries. Later quilters and shops enjoyed and understood her happy, whimsical style. Mary Lou has traveled across the world to many countries. Her goal is to get each quilter to do a Story quilt about themselves and who and what they love so that in the future, people will know about this quilter and what was important to them.

STORY QUILTS - Quilted Memories Mary Lou's best and most popular workshop, working with color, composition and imagination, these quilts tell about you, what and who you love and with sentiments and smiles make the viewer know something special about the artist that they didn't know before. This class helps you "think" of events in your past with a positive, happy outlook and offers up many ideas that tell of you and events you remember. This surprises the artist often and lets process take flight as you stretch and learn as you sew. It is both fun and satisfying too. Hand & Machine. All Levels.



NANCY BRENAN DANIEL ----- Tempe, Arizona

After completing a MA in Art History at Arizona State University Nancy continued her education in color, design, history and adult education. She has a flair for making complex-looking designs easy to cut and sew. Quilters from around the world have enjoyed her stress-free, yet highly productive workshops. She is a certified Judge and Teacher and a writer/designer of the many Slice 'em and Dice 'em: Disappearing Nine-Patch quilts as well as other original rotary cutting techniques. Nancy has appeared on TV shows and has taught at major events including the AQS and the IQF.



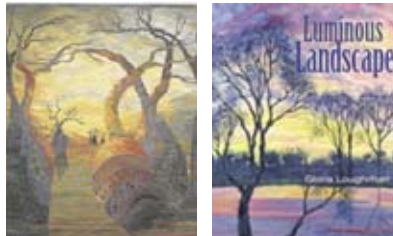
GLORIOUSLY SPECTACULAR QUILTS... Every Time Use them up... Every last SCRAP! Fail-Proof "recipes" for stunning or elegant SCRAP quilts. Make small memory guides in class using some of your own scraps. Anyone can learn and use these techniques. Learn to identify your color choices and preferences -- and learn to use them to best advantage! Learn the skills and guidelines to use your scraps with confidence and start creating a stunning SCRAP QUILT. If you know the Slice 'em & Dice 'em: you'll love this NEW series. Machine. All Levels. \$27 supply fee. Materials fee \$27



GLORIA LOUGHMAN ----- Victoria, Australia

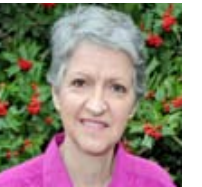
After completing studies in design and color as part of a Diploma of Art in 1996, Gloria began to make large vivid landscape quilts depicting the Australian bush. Having the opportunity to travel to many unique and fascinating parts of her continent, she is continually challenged to reproduce these images in fabric. Most of the textiles used have been hand dyed or painted and feature extensive machine embroidery. These quilts have won many major awards in Australia, Europe, Japan and the United States. Her quilt 'Kimberley Mystique' was the winner of Australia's most prestigious national quilting award in 2003.

PAINTING A LANDSCAPE IN COLOR Learn the key elements of design. Focal point, perspective and other basic design principles will be discussed then design your own wall hanging working from a photo, sketch or picture. Learn about exciting color combinations then move on to paint your own unique fabrics. Consider piecing options for different areas then using an overlay technique, construct your quilt. Embellish with machine embroidery and quilting for extra texture and dimension and look at various options for borders, quilting and bindings. Everyone is challenged to produce their own design but is supported through each stage of the process. Hand & Machine. All Levels.



FLAVIN GLOVER ----- Auburn, Alabama

Flavin Glover, a quilt designer and teacher, has a degree in Clothing, Textiles and Related Arts from Auburn University. Innovative Log Cabin and geometric patchwork quilts composed of many fabrics in vibrant colors have become her trademark. She has created numerous quilts inspired from landscapes and architecture. Her quilt "Row Houses" was selected one of the 100 Best American Quilts of the 20th Century.



LOG CABIN HOUSES -- A workshop designed for Log Cabin enthusiasts who want to learn the construction techniques used in Around the Corner, Tuscan Village, Carolina Row, Bayside, Freshly Painted and Hilltop Houses. Build a Log Cabin house quilt using a basic square block or a multiwidth-log rectangular block. You can personalize your color scheme and adapt the scale of the block--by changing the width of strips, enlarged designs are possible. You will receive all design grids and select which one you construct. In class exciting design variations will emerge inspired by Flavin's featured quilts. Machine. All Levels.



SUE NICKELS ----- Ann Arbor, Michigan

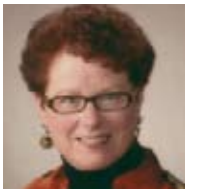
Sue has been quilting for 28 years, starting by hand and gradually focusing on machine work and been teaching machine techniques for the past 18 years. She has taught and lectured nationally for shops, guilds and major conferences, including AQS, IQA and NQA. She has also taught internationally in England, Norway and Spain. Sue's major awards include 1998 AQS Best of Show, 2003 IQA Master of Machine Artistry Award and the 2004 AQS Machine Workmanship Award. Sue emphasizes the best quality workmanship, never compromising quality for speed!

THE PERFECT FINISH: A Machine Quilting and Edge Finishing Workshop Learn Sue's machine quilting techniques for successful quilting on the home sewing machine. Discussion on supplies and designs, as well as stipple quilting and variations. Create a mini-quilt to incorporate machine quilting and creative edgings including traditional bindings, piped bindings, scalloped edge bindings and a wonderful loopy edge binding. Then Sue will have choices for your own project that include a small feather wall quilt, table runner, purse or sewing kit. Machine. All Levels.



PAT HOLLY ----- Ann Arbor, Michigan

Author, teacher, and quiltmaker, Pat Holly has been quilting for over twenty years and entering competitions for the last ten. She attended the University of Michigan School of Art studying color, graphic design, and weaving and fabric design. Pat has worked with her sister Sue Nickels on many award winning quilts such as the well known, The Beatles Quilt and The Space Quilt. One of Pat's specialties is Miniature Applique winning numerous National and International awards.



MINIATURE MACHINE APPLIQUE In this four day workshop, students will learn the stitched raw edge machine applique technique, Pat's technique for embellishing backgrounds and have the chance to make a 4" x 6" postcard picture to learn these skills. Next, students will be given a choice of patterns Pat has designed and provided and will make their own miniature applique quilt. Pat will share the specific skills she has developed while making her award-winning miniature machine appliqued quilts. Machine. All Levels.